

122 Keyboard AS/400 Printing
Low Cost Ethernet iSeries TN3270e TCP/IP
TN5250 Windows CE

I-O 5735km/5755km IPDS/SCS Printer Gateways for Kyocera Printers



The I-O 5735km and 5755km Printer Gateways are high speed Ethernet-in, Ethernet-out print servers that convert native IBM host print jobs to PCL 5e allowing the jobs to be printed on Kyocera printers and Multi-functional products (MFP's). The 5735km supports a single Kyocera printer and is designed for high-volume, high speed, printing applications. The 5755km will support up to three Kyocera printers and MFP's in light to moderate host printing applications. Both products deliver IBM AFP/IPDS and SCS printing via Ethernet, and provide the control and printer feedback found in an IBM printing environment. In addition to IBM host connectivity, the 5735km and 5755km support Kyocera's finishing features.

High Speed Printing

Attached anywhere on the LAN, the 5735km/5755km supports 10/100 Mbps Ethernet LAN environments. Without the bottleneck of a slow parallel port, I-O Gateways are capable of supporting printer speeds that exceed 100 pages per minute.

Finishing Support

Kyocera's finishing features are supported by the 5735km/5755km. Finishing features such as duplexing, collating, stapling or hole-punching, can be utilized in a host environment.

Reliable IBM Host Printing

The I-O Gateway offers the same reliable, full-function, IBM host printing and control found with direct attached legacy twinax or coax printers. With the 5735km/5755km, IBM host print jobs are not lost in the "black hole" of LAN printing. The I-O Gateway provides bi-directional communication between the printer and the IBM host, allowing error reporting and page range printing.

Simple Setup

Whether selecting TCP/IP or SNA, configuration is made easy through the use of I-O's menu-based Configuration Utility.



I-O 5735km/5755km IPDS/SCS Printer Gateways

I-O 5735km/5755km IPDS/SCS Printer Gateways

Technical Specifications

For AS/400, iSeries, eServer i5

- **Protocols**
TCP/IP (PPR/PPD, TN5250e, LPR/LPD), SNA (APPC), AnyNet (SNA over TCP/IP)
- **IPDS Emulations**
IBM 4028 AS1, 3812-2, 3816-1D/S, includes 4312/17 font support
- **SCS Emulations**
IBM 3812-1, 4214, 5224, 5225, 5256
- **IPDS Towers**
Supports all towers
- **System Requirements**
OS/400 Release 3.1 or higher

For S/390 – zSeries

- **Protocols**
TCP/IP (PPR/PPD, LPR/LPD), TN3270e
- **IPDS Emulations**
IBM 4028 AS1, 3812-2, 3816-1D/S, includes 4312/17 font support
- **IPDS Towers**
Supports all towers
- **System Requirements for OS/390 or MVS**
PSF/MVS Version 2.2.0 with APR OW15599, MVS Scheduler with APRA 0212236, TCP/IP Version 3.1 or higher

Features

- AFP/IPDS & SCS Printing
- High Speed Printing, 100+ ppm
- I-O Customized Finishing Commands
- Full IBM Host Control of Print Jobs
- Remote Printing
- I-O's Award Winning Printer Emulations

For LAN Systems

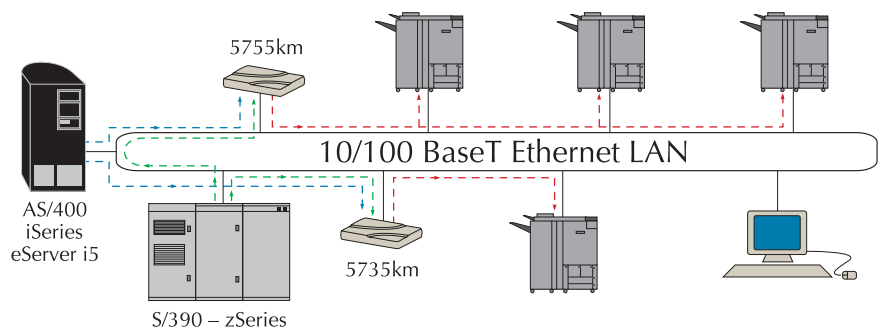
- **Protocols**
TCP/IP (LPR/LPD), IPX/SPX, NetBIOS, I-O DirectPort™ (Windows 9x Peer-to-Peer)
- **Supported LAN Hosts**
Windows, Novell, Unix

Printers

- **Ethernet Connection**
Port 9100, PCL 3/5e
Auto-sensing 10/100 BaseT
- **Parallel Connection**
Dot-matrix (SCS only), Laser (IPDS/SCS)

General

- **5735km Supports 1 Printer**
- **5755km Supports Up To 3 Printers**
- **Printer Ports**
One IEEE 1284 bi-directional Centronics parallel port
- **Power Supply**
100-240V auto-switching (IEC)
- **Configuration**
I-O Configuration Utility requires a Windows 95 or higher PC



Benefits

- IBM host print jobs can be printed on a Kyocera printer or MFP in an Ethernet environment.
- Data conversion is accomplished at the 5735km/5755km and sent to the Kyocera printer or MFP via the Ethernet LAN – without the bottleneck of the parallel port, the 5735km/5755km supports the high speed printing capability of Kyocera printers and MFP's.
- Kyocera finishing features such as duplexing, collating, stapling, folding, hole-punching, etc. can be utilized in a host environment.
- The 5735km/5755km provides bi-directional communication between the host and the printer, via port 9100 and PJI commands.
- The Kyocera printer or MFP can be attached locally or remotely via a WAN or VPN network – the Kyocera printer does not need to be next to the 5735km/5755km.
- All AFP/IPDS towers and SCS functions such as duplex, page offset, COR, fonts, and barcode, are fully supported by the 5735km/5755km.



I-O 5735km/5755km IPDS/SCS Printer Gateways