
Adaptio

5765e Gateway Print Server®

User's Guide



Copyright and Trademark Notices

Copyright 2014 I-O Corporation.

ALL RIGHTS RESERVED.

Information in this document is subject to change without notice and does not represent a commitment on the part of the manufacturer. No part of this guide may be reproduced or transmitted in any form or means, electronic or mechanical, including photocopying and recording, for any purpose, without the express written permission of the manufacturer.

Every effort has been made to make this guide as complete and accurate as possible, but no warranty of fitness is implied. The authors and the publisher shall have neither responsibility nor liability to any person or entity with respect to loss or damages arising from the use of information contained in this guide. This disclaimer does not apply in countries where such provisions are inconsistent with local law.

I-O® is a registered trademark of I-O Corporation. All trademarks are acknowledged.

Document Number: SWPSMS-OMAN02-115
July 2014

I-O Corporation
14852 South Heritage Crest Way
Unit 1-A
Bluffdale, UT 84065
801-973-6767
www.iocorp.com

Contents of this box

- 5765e adaptio gateway box
- AC to 5vdc power adapter
- CD containing the Configuration Utility V4.73e



NOTE: THE CD CONTAINS THE CONFIGURATION UTILITY PROGRAM AND SUPPORTING MANUALS WHICH ARE USED TO CONFIGURE THE 5765E ADAPTIO GATEWAY BOX. IF YOU HAVE AN EARLIER VERSION OR FOR SOME REASON YOU DID NOT RECEIVE OR HAVE MISPLACED THE CD, YOU CAN DOWNLOAD THE IOCU_473E UTILITY BY GOING TO I-O'S FTP SITE:
[FTP://FTP.IOCORP.COM/UTILITIES/CONFIGURATION%20UTILITY/](http://FTP.IOCORP.COM/UTILITIES/CONFIGURATION%20UTILITY/)

Preface

I-O's **5765e *adaptio/Gateway Print Server***[®] converts IBM's SCS and IPDS proprietary data streams into data streams that can be sent to ASCII based printers. In essence, the 5765e *adaptio/Gateway* makes a standard printer look like an IBM host printer to an IBM iSeries midrange or zSeries mainframe host.

This document describes the installation, basic configuration and operation of ***adaptio/Gateway***. Companion documents describe in detail the configuration of the IBM host, the customization of the I-O SCS and IPDS Printer Emulations and the Configuration Utility's various screens and configuration parameters. These are:

- The SCS Reference Manual
- The IPDS Reference Manual
- The Configuration Utility Help manual

Each of these documents can be easily accessed on the installation CD or downloaded from ftp://ftp.iocorp.com/Host_Print/adaptio/

This guide consists of the following chapters:

- **Introduction:** Provides an overview of I-O's ***adaptio/Gateway*** Print Server.
- **Installation:** Describes how to install ***adaptio/Gateway***.
- **Configuration:** Describes how to setup ***adaptio/Gateway***.
- **IBM Host Configuration:** Provides an overview of the setup process for both the iSeries midrange and zSeries mainframe hosts. The detail processes are fully described in two companion documents, the SCS Reference Manual and IPDS Reference Manual.
- **Operation:** Describes how to use ***adaptio/Gateway***.
- **Advanced Configuration:** Provides an overview of the configuration customization capabilities of the product. Customization of I-O's SCS and IPDS printer configuration are more fully described in two companion documents, the SCS Reference Manual and IPDS Reference Manual.
- **Troubleshooting:** Provides solutions to operational problems that you may encounter while using the product.
- **End User License:** States the license and warranty conditions.

The following symbols are used in the guide:



Caution: This symbol highlights procedures that if not correctly performed or adhered to, could damage or corrupt the product or adversely affect the security and functionality of the product. Do not proceed beyond such points until the required conditions are fully understood and achieved.



Note: This symbol denotes useful additional information that is relevant to the procedure or feature being described.



Tip: This symbol denotes a hint, shortcut or alternate method to aid or supplement the procedure being described.

Consistent with our policy of continuous development, the product you received may have features different from those described in this guide. Please visit our web-site www.iocorp.com for current information.

Table of Contents

Preface	3
Table of Contents	4
Introduction	5
Installation	6
<i>Requirements</i>	6
<i>Installation Process</i>	6
<i>Configuration Utility</i>	6
<i>Assigning an IP Address</i>	7
<i>Accessing the 5765 to reset the IP address</i>	8
<i>Changing the Device Name</i>	8
<i>Restoring Factory Defaults</i>	8
<i>Obtaining a License for additional sessions</i>	8
<i>Applying a New License File</i>	9
Operation	9
<i>Adding an IPDS Session</i>	10
<i>Adding an SCS Session</i>	11
<i>Edit a Session</i>	11
<i>Delete a Session</i>	11
<i>Refresh the List of Sessions Screen</i>	12
IBM Host Configuration	12
<i>IPDS Setup</i>	12
<i>5250 SCS Setup</i>	12
<i>3270 SCS Setup</i>	13
Advanced Configuration	14
<i>Supported IPDS Customization Options</i>	14
<i>Supported SCS Customization Options</i>	14
Troubleshooting	15
<i>Updating Firmware</i>	15
<i>Session Status Indicators</i>	16
<i>Capturing a Data File</i>	17
<i>Errors</i>	18
End User License	19

Introduction

This chapter provides a brief overview of I-O's **5765e adaptio/Gateway** Print Server.

adaptio/Gateway is a hardware product that converts IBM's proprietary SCS and IPDS data streams into standard printer languages used by products from companies such as HP, Canon, Kyocera, Xerox, Okidata, etc. Print jobs are sent from the IBM host to **5765e adaptio/Gateway**, converted and then redirected to the desired printer. **adaptio/Gateway** accomplishes this by converting IBM's EBCDIC character set to the ASCII character set. IBM's SCS command structure is converted to PCL 3, Epson or Proprinter command languages while IPDS is converted into PCL 5e.

Connection of the I-O host printing product to the IBM host is accomplished over an Ethernet link between the **adaptio/Gateway** and the IBM host using TCP/IP. Destination printers are also connected on the Ethernet link.

For SCS data streams, TN5250e is used for iSeries connections while TN3270e is used for zSeries connections. For IPDS data streams, IBM's proprietary PPR/PPD protocol is used (this is occasionally called Port 5001 Sockets).

For 5250 hosts when using TN5250e, configuration is only required at the I-O product as the IBM host will automatically create a print device, writer and spooler. However, the IBM host must be configured to use TCP/IP and TN5250e, and setup for automatic device configuration.

For 3270 hosts when using TN3270e, configuration is required at the both the I-O product and the IBM host.

For IPDS, configuration is required at the both the I-O product and the IBM host.



CAUTION: BECAUSE OF THE COMPLEXITY OF CONFIGURING IPDS AND/OR MAINFRAME PRINTERS, A KNOWLEDGEABLE HOST SYSTEM ADMINISTRATOR OR IBM SPECIALIST MUST PERFORM THE PROCESS. THE INSTRUCTIONS CONTAINED IN THIS AND RELATED DOCUMENTS ARE INTENDED TO ONLY PROVIDE A BRIEF OVERVIEW OF THE PROCESS.

Once the **adaptio/Gateway** and IBM host are properly configured, print jobs sent from the IBM host are issued in IBM's proprietary EBCDIC character set and use the SNA Character String (SCS) command structure or the Intelligent Printer Data Stream (IPDS). The I-O Printer Emulation in **adaptio/Gateway** converts EBCDIC to ASCII and the SCS command structure to PCL 3, Epson or IBM Proprinter command structures while IPDS is converted into PCL 5e. The I-O Printer Emulations can be customized to change the host print attributes if needed (CPI, page orientation, edge-to-edge, etc.). For 3270 hosts, the I-O SCS Printer Emulation will also handle the DSC (LU3) data stream as well as the SCS (LU1) data stream.

I-O has also included a number of advanced printing features in the I-O SCS Printer Emulation. These include the ability to send printer specific commands as part of the SCS data stream that the IBM host does not know the printer is capable of performing. Other features include I-O's bar code language, graphing language, and even color support.

I-O's IPDS Printer Emulation includes customization capabilities for font substitutions, simulated edge-to-edge for printing on non-edge-to-edge printers, paper tray mapping, etc.



NOTE: FOR BREVITY, THE TERMS "PRINT SERVER", "PRODUCT" AND "I-O PRODUCT" WILL REFER TO THE SPECIFIC I-O PRINT SERVER, PRINT BOX, ETHERNET DISPLAY, THIN CLIENT, SOFTWARE PRINT SERVER, ETC. HOST PRINTING SOLUTION THAT YOU ARE USING. SYSTEM I5, ISERIES AND AS/400 HOSTS WILL BE REFERRED HEREIN AS 5250 HOSTS. ZSERIES AND S/390 MAINFRAME HOSTS WILL BE REFERRED HEREIN AS 3270 HOSTS. THE TERM IBM HOST AND HOST WILL ALSO BE USED AND REFERS TO THE APPROPRIATE 5250 OR 3270 HOST WITHIN THE CONTEXT OF THE TOPIC BEING DISCUSSED.

Installation

This chapter covers the process to install I-O's **adaptio/Gateway** print server.

Requirements

The following are the requirements for installation of the **adaptio/Gateway**:

- Static IP Address assigned to the AGW box
- Qualified Windows and IBM host administrators
- Network attached PCL 5e laser, Epson or IBM Proprinter compatible dot-matrix printers

Installation Process


The following are the steps to install the **adaptio/Gateway**:

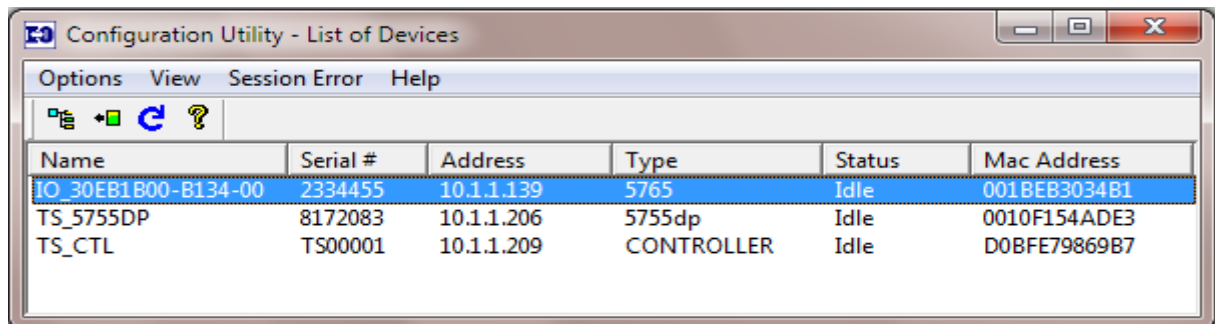
1. Insert the **Configuration Utility** CD in your computer's CD-ROM drive. The installation process will automatically begin. If not, click START | RUN, and browse to the CD drive, select the configuration utility "setup.exe" file and execute it.
2. Follow the InstallShield wizard screens.
3. When the InstallShield wizard is complete, the configuration utility will be installed as a Program file.
4. Connect the **adaptio/Gateway** box to the network and connect power.
5. Start the Configuration Utility by clicking on START | All Programs | I-O Configuration Utility.
6. The Adaptio/Gateway should show on the list of devices with a device type of **5765** which indicates an IPDS/SCS gateway box.



NOTE: CONFIGURATION UTILITY VERSION 4.73E IS REQUIRED FOR PROPER CONFIGURATION OF THE ADAPTIO GATEWAY. DOWNLOAD FROM: <FTP://FTP.IOCORP.COM/UTILITIES/CONFIGURATION UTILITY/>

Configuration Utility

The I-O Configuration Utility displays the various I-O products which gives you access to configure the devices. Highlight the **adaptio/Gateway** and either click on the  button or double click on the device to access the configuration of the box.

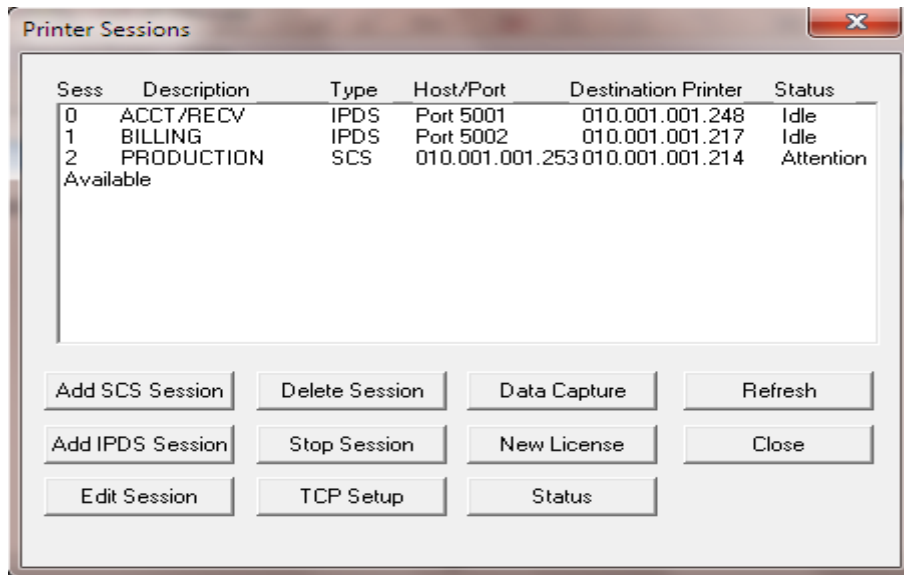


Name	Serial #	Address	Type	Status	Mac Address
IO_30EB1B00-B134-00	2334455	10.1.1.139	5765	Idle	001BEB3034B1
TS_5755DP	8172083	10.1.1.206	5755dp	Idle	0010F154ADE3
TS_CTL	TS00001	10.1.1.209	CONTROLLER	Idle	D0BFE79869B7



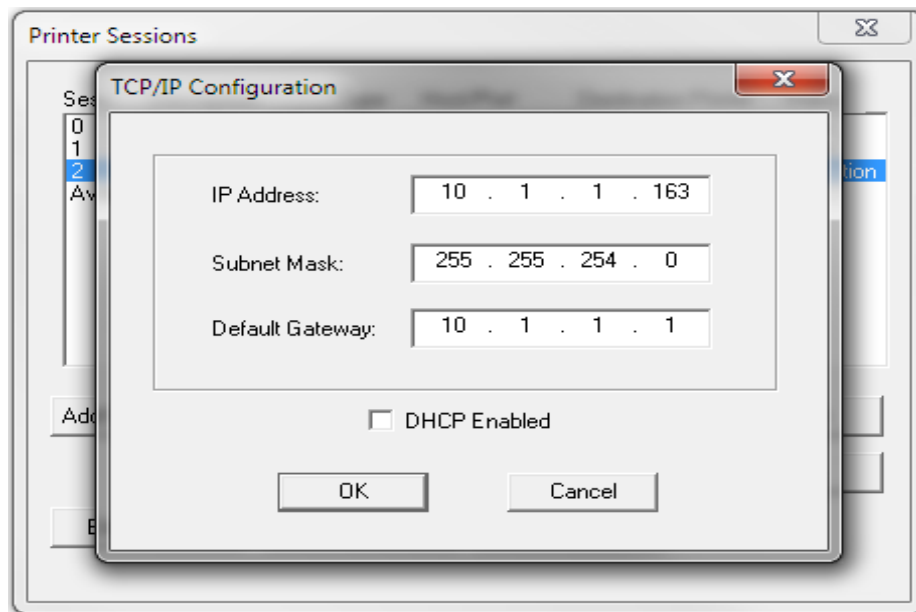
NOTE: THE PRODUCT TYPE WILL BE DISPLAYED AS A 5765 FOR AN IPDS/SCS GATEWAY OR AS A 5760 FOR AN SCS GATEWAY.

Opening the configuration of the gateway box will show the number of printer sessions you purchased. This example shows a 4 session license.



Assigning an IP Address

The 5765 comes with Dhcp set by default, so the unit should pick up an IP address if you have a Dhcp server. You can change the IP address by clicking on the TCP Setup button, uncheck the Dhcp box and enter a static IP, Subnet Mask, and Default Gateway.



NOTE: IF THE BOX DOESN'T SHOW ON THE CONFIGURATION UTILITY, DHCP FAILED TO ASSIGN AN IP ADDRESS OR A STATIC ADDRESS WAS ASSIGNED PREVIOUSLY THAT IS NOT SUPPORTED BY YOUR NETWORK.

Accessing the 5765 to reset the IP address

If the 5765 fails to show on the Configuration Utility you will need to attach a monitor, keyboard and mouse to the box to be able to access the Windows Control Panel.

If you do not have a multi-port USB Hub, a second USB port for the mouse can be accessed by taking a sharp object such as an Xacto knife and carefully lift the front label up from the left side.

Powering on the unit will show a Windows screen, click on Start, Settings, Network and Dial-up Connections.

Click on the network connection and either assign a new static IP or select the Radio Button for Obtain an IP address via DHCP.

After clicking OK, you should be able to rescan from the Configuration Utility and see the box with the static or Dhcp assigned address. You can then go through the configuration and make any other changes.

Changing the Device Name

The device name that shows on the Configuration Utility is Windows generated, but can be changed to make identification easier when multiple devices are listed.

With the monitor, keyboard, and mouse attached, click on Start, Settings, Control Panel, System, Device Name and enter the desired Device Name.

Restoring Factory Defaults

Defaults can be restored using the Configuration Utility and selecting Options, Restore Factory Defaults. However, if the unit doesn't show on the Configuration Utility, you can go through the Control Panel, System, and in the General tab, check the box for Reset the terminal to factory-default property settings.

This will enable Dhcp and clear out any previously configured sessions. If you want a specific device name, you will need to go back into System, Device Name and re-enter the desired name before removing the monitor, keyboard and mouse.



NOTE: AN EARLY VERSION OF THE FIRMWARE DID NOT ALLOW ACCESS TO THE CONTROL PANEL FOR NETWORK AND SYSTEM CHANGES. SEE TROUBLESHOOTING FOR INSTRUCTIONS TO UPDATE FIRMWARE.

Obtaining a License for additional sessions

When you first install the **adaptio/Gateway** it comes with the printer sessions you ordered pre-installed.

To acquire a license for additional sessions (up to 10 sessions) for the **adaptio/Gateway**, follow these steps:

1. Provide your dealer with a purchase order for the desired number of additional sessions.
2. Provide your dealer with the following information:
 - Serial number of the adaptio/Gateway box.
 - First and Last Name
 - Company Name and Address
 - Phone Number
 - E-mail Address
3. Your dealer will submit his purchase order to I-O's order department.
4. A license file will be sent by e-mail to the person listed in the contact information.
5. Once the license file is received, follow the instructions in this section for applying a license file.

Applying a New License File

After applying the license file, additional print sessions will be activated.

To apply a license file, follow these simple steps.

1. Copy the attached license file into a temporary directory.
2. Start the Configuration Utility and open the configuration of the gateway box.
3. Ensure all sessions are not actively printing jobs before continuing.



CAUTION: PRINT DATA COULD BE LOST IF THE SESSIONS ARE NOT IDLE. AS AN ALTERNATE, STOPPING ALL SESSIONS WILL ENSURE THAT NO DATA WILL BE LOST.

4. From the Printer Sessions, click New License.
5. Navigate to the license file in its temporary directory.
6. Click Open. The license will be copied into the gateway box.
7. Click Close and you will be prompted to Reset the box.
8. After the Reset, open the configuration and the available sessions will shown on the list.

If you encounter problems, or have questions, please refer to the following resources:

- I-O's Knowledge Base at <http://www.iocorp.com/help>
- The User's Guides and Reference Manuals found at ftp://ftp.iocorp.com/Host_Print/adaptio/ or Manuals on the I-O Configuration Utility CD.



NOTE: THESE MANUALS ARE FOR THE ADAPTIO SOFTWARE SERVER AND SOME REFERENCES MAY NOT PERTAIN TO THE **ADAPTIO/GATEWAY**.

- E-mail I-O's Technical Support Group at support@iocorp.com
- Contact I-O's Technical Support Group by voice at 801-973-6767.

Operation

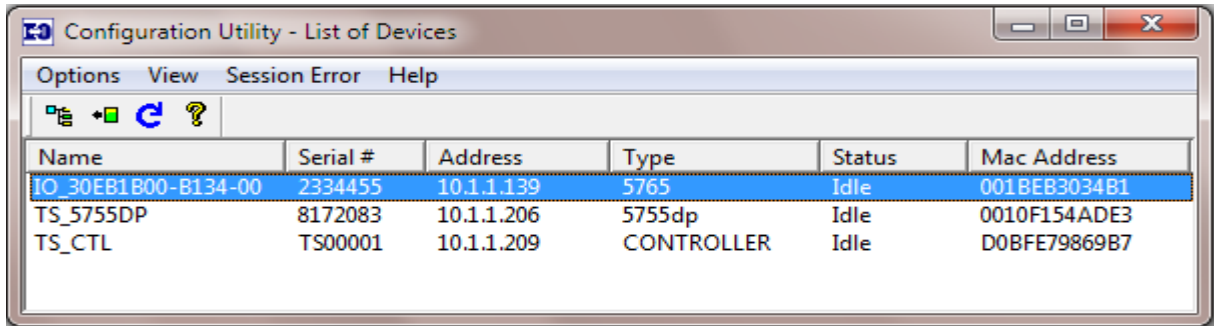
This chapter covers the process of adding, editing and deleting sessions, diagnostic processes, etc.




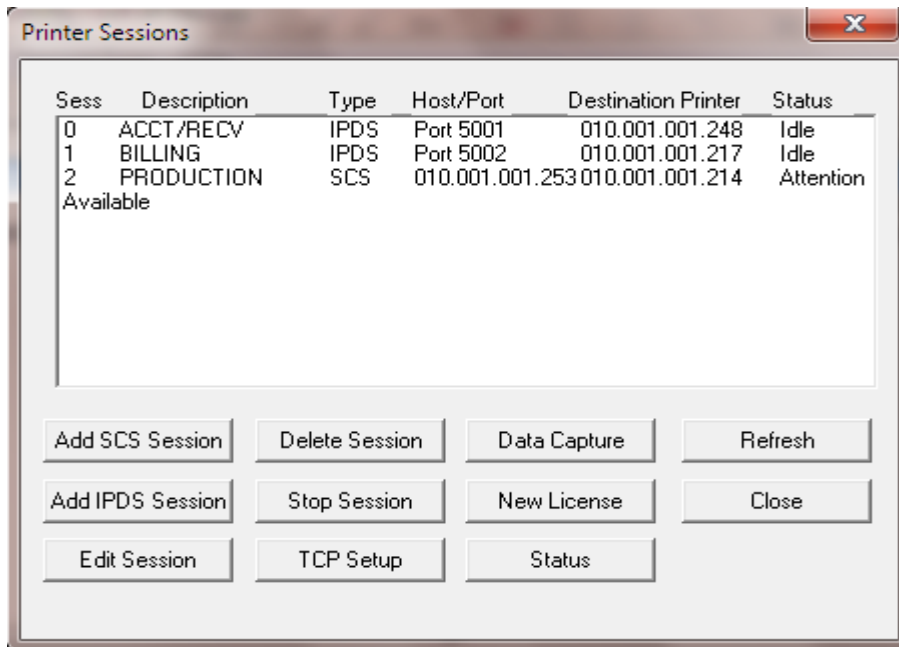
NOTE: THE INSTRUCTIONS PRESENTED HEREIN ARE FOR WINDOWS XP PRO. SLIGHT VARIATIONS OCCUR DUE TO THE DIFFERENCES BETWEEN THE VARIOUS WINDOWS OPERATING SYSTEM VERSIONS.



TIP: DETAILED INSTRUCTIONS FOR SOME OF THE PROCESSES DESCRIBED HERE MAY BE FOUND IN THREE COMPANION DOCUMENTS, THE **SCS REFERENCE MANUAL**, THE **IPDS REFERENCE MANUAL**, OR THE **CONFIGURATION UTILITY HELP**. THEY CAN BE VIEWED FROM THE **I-O CONFIGURATION UTILITY CD**, OR FROM I-O'S ftp site: ftp://ftp.iocorp.com/Host_Print/adaptio




Open the configuration options for the box by highlighting the **adaptio/Gateway** and either click on the  button or double click on the device to access the configuration menus.




Adding an IPDS Session

To add a new session:

1. Start the **IO Configuration Utility**.
2. Highlight the adaptio/Gateway and click on  or double click to open the Device Configuration window.
3. Click Add IPDS Session.
4. Fill in the data required on the IPDS Configuration screen.
5. If additional customization of the session is required, click on the Advanced Setup Options button. Refer to the **Utility Help document** and **IPDS Reference Manual** for a description of the information required in each field.
6. Click the OK button on the IPDS Configuration screen to save the configuration.
7. On the List of Sessions screen, highlight the newly added session. Then start the session by simply clicking the Start button.
8. After a few seconds the Status column will show that the session has started.
9. The final step is to create a printer device on the IBM host. Refer to the **IPDS Reference Manual**.


Adding an SCS Session

To add a new session:

1. Start the IO Configuration Utility.
2. Highlight the **adaptio/Gateway** and click on  or double click to open the Device Configuration window.
3. Click Add SCS Session.
4. Fill in the data required on the SCS Configuration screen.
5. If additional customization of the session is required, click on either of the two tabs (AS/400 SCS Printing or Mainframe SCS/DSC Printing tabs) and/or Telnet Restart buttons. Refer to the **adaptio/Gateway Help document** and **SCS Reference Manual** for a description of the information required in each field.
6. Click the OK button the SCS session description screen to save the configuration.
7. On the List of Sessions screen, highlight the newly added session. Then start the session by simply clicking the Start button.
8. After a few seconds the Status column will show that the session has started.
9. If the IBM host is a System i5, iSeries, or AS/400, the host will automatically create a printer device and start the writer. If the IBM host is a zSeries mainframe, the system administrator must create the printer device, writer, etc. Refer to the **SCS Reference Manual**.

Edit a Session

To edit a session:

1. Start the IO Configuration Utility.
2. Highlight the **adaptio/Gateway** and click on  or double click to open the Device Configuration window.
3. Highlight the session and click on the Edit Session button. You may also double click on the session in the List of Sessions.
4. The same screens that are used in adding a session are presented. Make the appropriate changes.
5. Click the OK button to save the configuration.
6. Restart the session.



NOTE: SESSIONS MUST BE STOPPED TO BE EDITED. IF THE SESSION IS NOT STOPPED, YOU WILL BE GIVEN THE OPTION TO STOP THE SESSION OR SIMPLY VIEW THE CONFIGURATION OF THE SESSION.

Delete a Session

To delete a session:

1. Start the **IO Configuration Utility**.
2. Highlight the **adaptio/Gateway** and open the device.
3. Highlight the session you want to delete and Stop the session.
4. Then click the Delete Session button on the tool bar.



NOTE: SESSIONS MUST BE STOPPED TO BE DELETED. IF THE SESSION IS NOT STOPPED, YOU WILL BE GIVEN THE OPTION TO STOP THE SESSION.

Refresh the List of Sessions Screen

The List of Sessions screen in the **IO Configuration Utility** will automatically be updated every few seconds or you can refresh the list at any time by clicking on the Refresh button on the tool bar.

IBM Host Configuration

This chapter provides a brief description of the process to configure the IBM host for use with I-O's **adaptio/Gateway** Print Server. For the complete process, please refer to the **SCS Reference Manual** and the **IPDS Reference Manual**.

For each IBM host printer device, a separate session is setup on the **adaptio/Gateway**. Generally each session on the **adaptio/Gateway** is sent to a different printer. However, one printer may be setup as the destination printer for more than one session.

Configuration of a session involves the following steps:

- Setup the IBM host
- Setup a session on the **adaptio/Gateway**.
- Customization, if needed, of the session's configuration in **adaptio/Gateway** to adjust the final printing output.

IPDS Setup

This user's guide contains specific instructions on the setup and use of **adaptio/Gateway**. Companion manuals contain more detailed instructions on setting up the IBM host and customizing the IPDS printer session.

Please refer to the following manuals and guides to setup IPDS sessions:

- Setting up the IBM System i5, iSeries or AS/400 midrange host are found in the **IPDS Reference Manual**.
- Setting up **adaptio/Gateway** sessions are found in the *Operation* chapter in this guide.
- Customizing the **adaptio/Gateway** sessions is found in the **IPDS Reference Manual**.
- The **IO Configuration Utility Help** manual also provides instructions on the use of **adaptio/Gateway** and describes the various configuration screens.



NOTE: THESE MANUALS AND GUIDES MAY BE VIEWED ON EITHER THE **IO CONFIGURATION UTILITY CD** UNDER MANUALS OR IO'S FTP SITE: [FTP://FTP.IOCORP.COM/HOST_PRINT/ADAPTIO/](ftp://ftp.iocorp.com/Host_Print/ADAPTIO/)

5250 SCS Setup

This user's guide contains specific instructions on the setup and use of **adaptio/Gateway**. Companion manuals contain more detailed instructions on setting up the IBM host and customizing the SCS printer session.

Please refer to the following manuals and guides to setup SCS sessions:

- Setting up the IBM System i5, iSeries or AS/400 midrange host is found in the **SCS Reference Manual**.
- Setting up **adaptio/Gateway** sessions is found in the *Operation* chapter in this guide.
- Customizing the **adaptio/Gateway** session is found in the **SCS Reference Manual**.
- The **Configuration Utility Help** manual also provides instructions on the use of the **adaptio/Gateway** and describes the various configuration screens.



NOTE: THESE MANUALS AND GUIDES MAY BE VIEWED ON EITHER THE **IO CONFIGURATION UTILITY CD** UNDER MANUALS OR IO'S FTP SITE: FTP://FTP.IOCORP.COM/HOST_PRINT/ADAPTIO/

3270 SCS Setup

This user's guide contains specific instructions on the setup and use of **adaptio/Gateway**. Companion manuals contain more detailed instructions on setting up the IBM host and customizing the SCS printer session.

Use the following manuals and guides to setup SCS sessions:

- Setting up the IBM zSeries mainframe and its associated Telnet 3270e server are found in the **SCS Reference Manual**.
- Setting up **adaptio/Gateway** sessions is found in the *Operation* chapter in this guide.
- Customizing the **adaptio/Gateway** session is found in the **SCS Reference Manual**.
- The **Configuration Utility** Help manual also provides instructions on the use of the **adaptio/Gateway** and describes the various configuration screens.



NOTE: THESE MANUALS AND GUIDES MAY BE VIEWED ON EITHER THE **IO CONFIGURATION UTILITY CD** UNDER MANUALS OR IO'S FTP SITE: FTP://FTP.IOCORP.COM/HOST_PRINT/ADAPTIO/

Advanced Configuration

I-O's **5765e *adaptio/Gateway*** can be configured to change the way IBM host print jobs are actually printed. Options include the ability to set the final print quality (draft or near-letter quality), the characters per inch used, input tray mapping, edge-to-edge printing, font substitutions, etc.

Advanced configuration can be accomplished through two different methods:

- The IO Configuration Utility.
- I-O's Host Download commands which embeds customization commands within the data stream coming from the IBM host.



TIP: THE **IO CONFIGURATION UTILITY** IS THE PRIMARY METHOD OF CUSTOMIZING THE **SCS** AND **IPDS** CONFIGURATION.

The **IO Configuration Utility Help** document describes each configuration screen and the values entered there. A detailed description of each customization option is found in the **SCS** and **IPDS** Reference Manuals.

The various Host Download options and their specific use are defined in the **SCS Reference Manual** and the **IPDS Reference Manual**.

Supported IPDS Customization Options

I-O's ***adaptio/Gateway*** supports all IPDS customization functions outlined in the **IPDS Reference Manual** with the exception of the following:

- Host Download Command 98 – Restore Defaults / Print Self-Test is not supported.
- Host Download Command 99 – Save Current Settings is not supported.



NOTE: ANY DOWNLOADED COMMANDS ARE NOT SAVED AND ARE NOT REFLECTED IN THE ADVANCED SETUP OPTIONS. STOPPING AND RESTARTING THE SESSION WILL CLEAR ANY DOWNLOADED COMMANDS.

Supported SCS Customization Options

I-O's ***adaptio/Gateway*** supports all SCS customization functions outlined in the **SCS Reference Manual** with the exception of the following:

- Host Download Command 98 – Restore Defaults is not supported.
- Host Download Command 99 – Save Current Settings is not supported.



NOTE: ANY DOWNLOADED COMMANDS ARE NOT SAVED AND ARE NOT REFLECTED IN THE ADVANCED SETUP OPTIONS. STOPPING AND RESTARTING THE SESSION WILL CLEAR ANY DOWNLOADED COMMANDS.

Troubleshooting

This chapter contains solutions for problems you may encounter while using the I-O's *adaptio/Gateway* Print Server. If a problem persists even after you implement the solutions provided here, or if you encounter a problem not listed here, please refer to the following resources:

- The I-O Knowledge Base at www.iocorp.com/help
- The Configuration Utility Help document
- The SCS Reference Manual
- The IPDS Reference Manual
- Your I-O Dealer
- I-O's Technical Support Group at 801-973-6767 or by email at support@iocorp.com.



NOTE: THE MANUALS AND GUIDES MAY BE VIEWED ON EITHER THE *IO CONFIGURATION UTILITY CD* UNDER MANUALS OR IO'S FTP SITE: [FTP://FTP.IOCORP.COM/HOST_PRINT/ADAPTIO/](ftp://ftp.iocorp.com/Host_Print/ADAPTIO/)

Updating Firmware

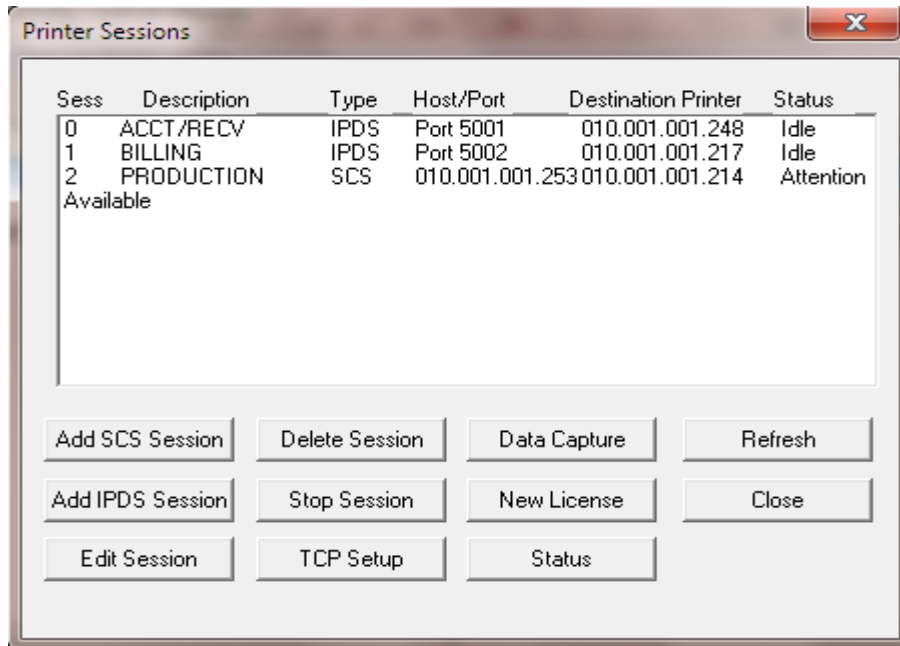
Updating firmware can be done through the Configuration Utility if the unit can be seen on the Utility. Refer to the following link to download the firmware file, Firmware 5765 V473.zip

ftp://ftp.iocorp.com/Host_Print/LAN_Print_Servers/5765%20Adaptio%20Gateway/

If you are unable to access the 5765 from the Configuration Utility and the Control Panel doesn't give you access to the Network Connections to reset the IP address, refer to the instructions found in the above link. [Firmware_update_instructions_5765.pdf](#)

Session Status Indicators

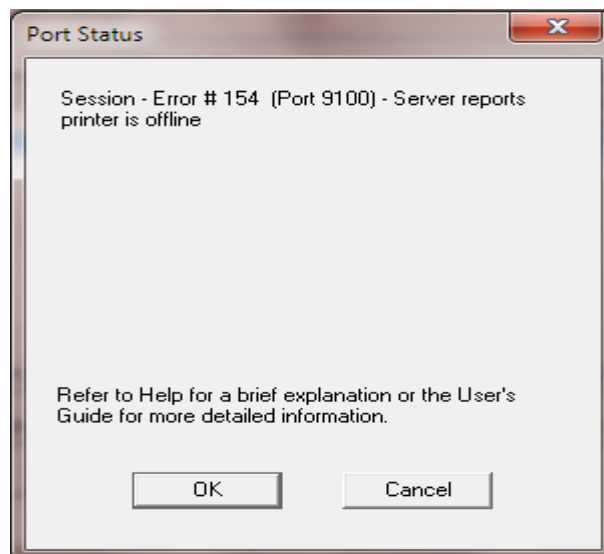
The **IO Configuration Utility** displays several items of information about each printer session. The column entitled “Status” shows the current status of each session.



The Status column will report the following:

- Attention – There is a condition that requires attention.
- Busy – The session is currently printing a job.
- Idle – There is no printing activity.
- Stopped – The session is stopped. No printing can occur.

When an Attention indicator is shown in the Status column, select the session and click on the Status bar.



The Session Error Message box will display information about the error condition. Refer to the **Configuration Utility Help document** for detailed information about the error. Click on Help and select Utility Help. Expand the List of Devices and select Session Errors.

Capturing a Data File

I-O's **adaptio/Gateway** Print Server includes a very useful tool that will capture the actual IBM IPDS or SCS data stream being received by the **adaptio/Gateway**. This captured data stream is saved in a file on the PC and then sent to I-O's Technical Support Group where it will be used to recreate the printing problem.

To run the Data Capture utility:

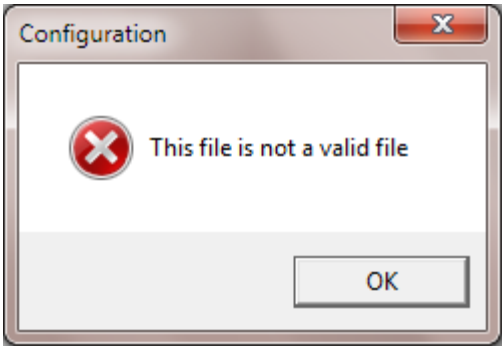
1. Start the **IO Configuration Utility**.
2. Open the configuration of the device and highlight the session you want to capture the data stream.
3. Click on Data Capture.
4. Leave the data type as "Default."
5. Click on Browse and select a folder, enter a file name for the captured data.
6. Click Open then Start.
7. At the IBM host, stop and restart the print writer.
8. Send the print job from the IBM host.
9. When the job is complete, stop the Data Capture process.
10. Send the file along with very detailed description of the printing problem to I-O's Technical Support Group. support@iocorp.com



NOTE: WHEN CAPTURING IPDS DATA, AFTER THE CAPTURE STOPS, WAIT AN ADDITIONAL 15 SECONDS FOR THE HOST TO CLOSE THE SESSION. THIS WILL RESULT IN A LITTLE MORE DATA BEING CAPTURED WHEN THE SESSION IS CLOSED. THIS IS ESSENTIAL FOR PROPER FILE PROCESSING.

Errors

The following is a brief list of problems that may occur. Please refer to I-O's Knowledge Base, the **SCS Reference Manual**, the **IPDS Reference Manual**, and the **Utility Help** document for a more complete listing of errors, troubleshooting hints and FAQ's.

Problem	Solution
<ul style="list-style-type: none">• The installation process of the Configuration Utility results in an error.	<ul style="list-style-type: none">✓ Windows 7 and newer OS versions requires Administrator privileges to install the Utility. Right click on the program and Run as Administrator if given the option. If the option is not present, access IO's knowledgebase article 512 from the following URL to enable the hidden administrator account: http://www.iocorp.com/help?p_filters_search=windows%207
<ul style="list-style-type: none">• What firewall settings are required?	<ul style="list-style-type: none">✓ Ping should be open.✓ Ports 5001 through 5010 must be open to receive the IPDS data from the IBM host.✓ Port 9100 may also need to be opened.
<ul style="list-style-type: none">• Invalid file screen appears	<ul style="list-style-type: none">✓ If an Invalid File screen is displayed, it indicates that the license file contains information that does not match the adaptio/Gateway Print Server. A new license file will be required. Please contact technical support. 

End User License

SOFTWARE LICENSE AGREEMENT

IMPORTANT -- READ THIS AGREEMENT CAREFULLY BEFORE INSTALLING THIS SOFTWARE. By installing this software on your computer system, you indicate your acceptance of the following terms and conditions. If you do not agree with these terms and conditions, do not proceed further and delete any information obtained from this software and return the software to I-O Corporation.

GRANT OF LICENSE. Subject to the terms and restrictions set forth herein, I-O Corporation (I-O) grants to you the right to use one copy of the software program or subsequent upgrade (SOFTWARE) on a single computer.

COPYRIGHT RESTRICTIONS. The SOFTWARE is owned by I-O or its suppliers and is protected by the United States copyright laws and international treaty provisions. You may either (i) make one copy of the SOFTWARE solely for backup and archival purposes provided that you reproduce all copyright and other proprietary notices that are on the original copy of the SOFTWARE provided to you, or (ii) transfer the SOFTWARE to a single hard disk provided that you keep the original solely for backup or archival purposes. You may not copy the written materials accompanying the SOFTWARE.

OTHER RESTRICTIONS. You may not rent or lease the SOFTWARE. You may transfer your interest in this License on a permanent basis provided you retain no copies or versions thereof and the recipient agrees to the terms of this Agreement. You may not reverse engineer, decompile, disassemble, or create derivative works from the SOFTWARE.

BREACH OF RESTRICTIONS. Breach of the copyright or any other restriction herein shall revoke the license granted without further action or notice by I-O.

LIMITED WARRANTY. I-O warrants this product for a period of ninety (90) days commencing from the date of purchase by the original end-user that: (i) the SOFTWARE will substantially conform to the applicable user documentation and (ii) that the media and the user documentation (if any) are free from defects in material and workmanship. I-O's liability shall be limited, at its option and expense, to refund to original end-user the actual amount paid by original end-user or to replace any defective or nonconforming product or part thereof. Original end-user may obtain warranty service by meeting the terms of the I-O's Software Product Warranty Service Policy in effect at the time of the request.

THE EXPRESS WARRANTY SET FORTH ABOVE IS IN LIEU OF ALL OTHER EXPRESS OR IMPLIED WARRANTIES. OTHERWISE, THE PRODUCTS ARE SOLD AS IS WITHOUT FURTHER OBLIGATION OR LIABILITY ON THE PART OF I-O. I-O EXPRESSLY EXCLUDES ANY IMPLIED WARRANTIES OF MERCHANTABILITY AND FITNESS FOR A PARTICULAR PURPOSE.

EXCEPT AS EXPRESSLY SET FORTH HEREIN, IN NO EVENT SHALL I-O BE LIABLE FOR ANY CLAIMS OR DAMAGE ARISING DIRECTLY OR INDIRECTLY FROM THE FURNISHING OR FAILURE TO FURNISH PRODUCTS, SPARE OR REPLACEMENT PARTS, INFORMATION OR SERVICES HEREUNDER. UNDER NO CIRCUMSTANCES SHALL I-O BE LIABLE IN ANY WAY FOR INDIRECT, SPECIAL OR CONSEQUENTIAL DAMAGES, INCLUDING, BUT NOT LIMITED TO LOST BUSINESS OR PROFITS, WHETHER OR NOT FORESEEABLE AND WHETHER OR NOT BASED ON BREACH OF WARRANTY, CONTRACT, OR NEGLIGENCE.

GENERAL PROVISIONS. You acknowledge and agree that (i) you have independently determined that the SOFTWARE licensed hereunder meets your intended requirements, and (ii) you have sole responsibility for the installation, use and results obtained from the SOFTWARE.

You acknowledge and agree that the SOFTWARE is subject to restrictions and controls imposed by the United States Export Administration Act (ACT) and the regulations there under. You agree and certify that neither the SOFTWARE nor any direct product thereof is being or will be acquired, shipped, transferred or re-exported, directly or indirectly, into any country prohibited by the ACT and the regulations there under or will be used for any purpose prohibited by the same.

This Agreement is governed by the laws of the State of Utah, USA. The provisions of the Uniform Commercial Code as therein adopted shall apply to this transaction.

Should you have any questions regarding this agreement, or if you wish to contact I-O Corporation, please write I-O Corporation, 14852 South Heritage Crest Way, Unit 1-A, Bluffdale, Utah 84065 or call (801) 973-6767.